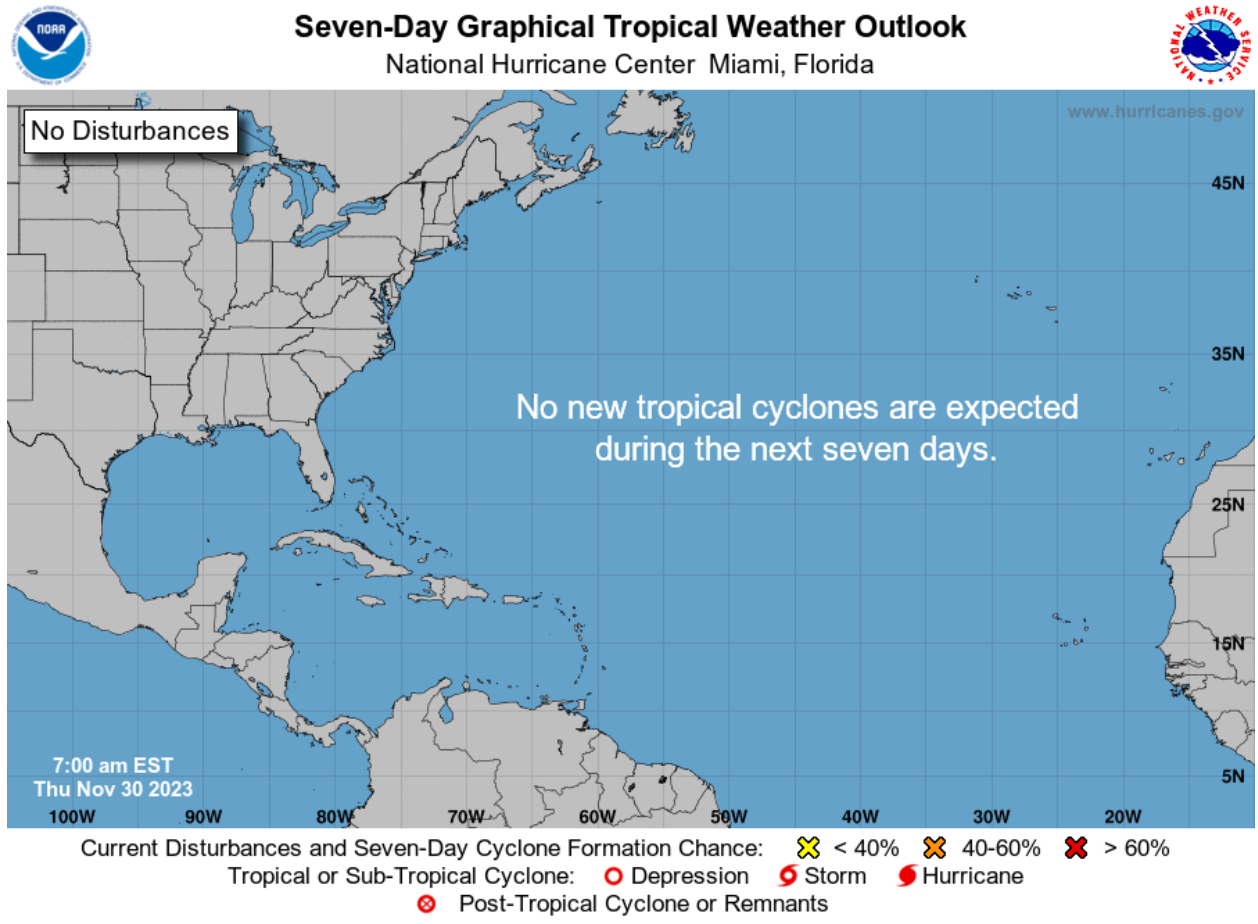


Port Operations/Weather (04-26-2024 0800 Hours)

MARINE SAFETY & SECURITY INFORMATION BULLETIN (MSSB)
Port Status USCG Captain of the Port Mobile – **Port Status: NORMAL**
See Below For Details

NHC Active Tropical Cyclones

The Atlantic hurricane season runs from June 1st through November 30th.



Tropical Weather Outlook Text

Tropical Weather Discussion

ZCZC MIATWOAT ALL
TTAA00 KNHC DDHHMM

Tropical Weather Outlook
NWS National Hurricane Center Miami FL
700 AM EST Thu Nov 30 2023

For the North Atlantic...Caribbean Sea and the Gulf of Mexico:

Tropical cyclone formation is not expected during the next 7 days.

\$\$
Forecaster Papin
NNNN

Quick Links and Additional Resources

TROPICAL CYCLONE FORECASTS

[Tropical Cyclone Advisories](#)

[Tropical Weather Outlook](#)

[Audio/Podcasts](#)

[About Advisories](#)

MARINE FORECASTS

[Offshore Waters Forecasts](#)

[Gridded Forecasts](#)

[Graphicast](#)

[About Marine](#)

SOCIAL MEDIA



[NHC on Facebook](#)



[Twitter](#)



[YouTube](#)



2023

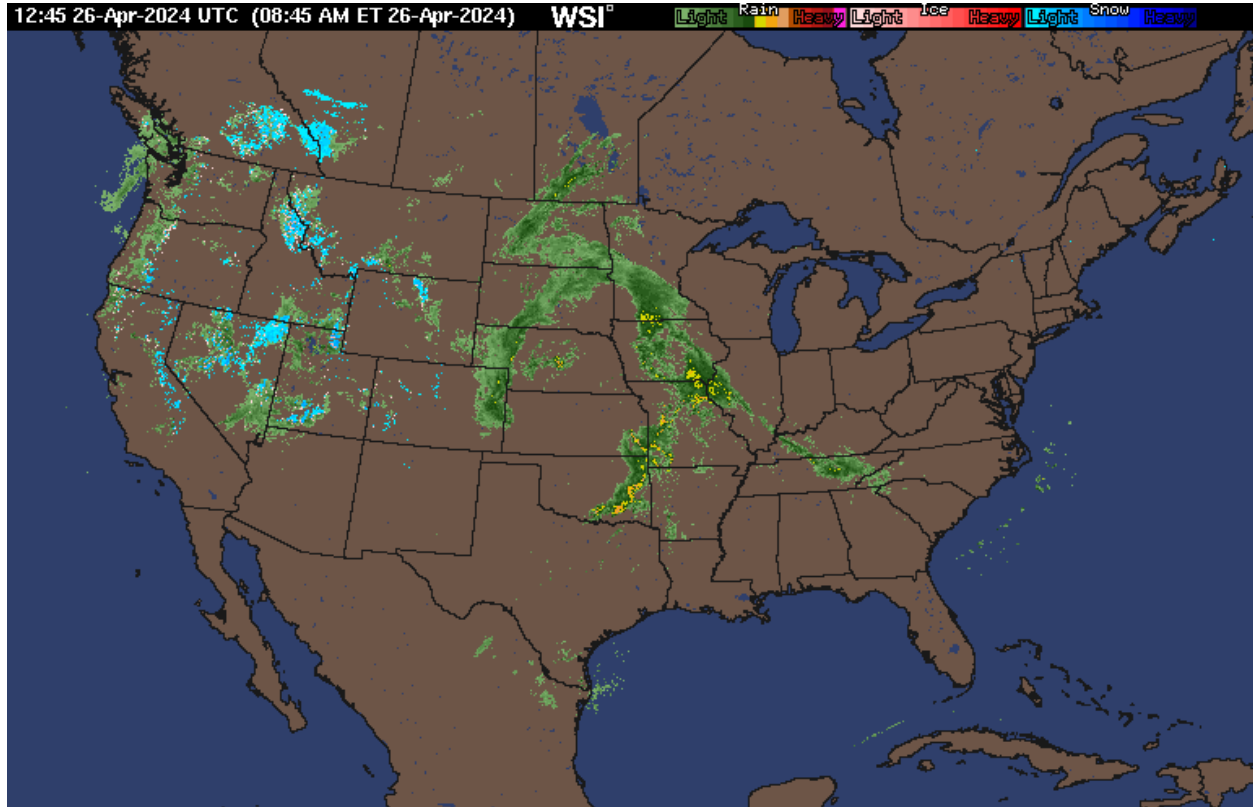
Atlantic Tropical Cyclone Names

Arlene	Harold	Ophelia
Bret	Idalia	Philippe
Cindy	Jose	Rina
Don	Katia	Sean
Emily	Lee	Tammy
Franklin	Margot	Vince
Gert	Nigel	Whitney

Source: National Hurricane Center

~~ARLENE, BRET, Cindy, Don, Emily, Franklin, Gert,
Harold, Idalia, Jose, Katia, Lee, Margot, Nigel,
Ophelia, Philippe, Rina, Sean, Tammy, Vince~~

INTELLICAST 2024



Port of Pascagoula Marine Conditions / Weather Forecast

Winds at Petit Bois Island:

Southeast (140 degrees true) 9.9 knots/gusting 13.0 knots

Seas/Swell Info (NDB 42012):

Southeast (131 degrees true) 2.3 feet @ 4.0 seconds

Pascagoula Tides:

High: 25th/1150 1.7

Low: 25th/2257 0.4

Sunset: 25th/1929

Sunrise: 26th/0613

GMZ532-262130
Mississippi Sound
355 AM CDT Fri Apr 26 2024

SMALL CRAFT ADVISORY IN EFFECT FROM THIS AFTERNOON THROUGH SUNDAY MORNING

TODAY

Southeast winds 15 to 20 knots with gusts up to 25 knots. Waves 2 to 4 feet.

TONIGHT

Southeast winds 20 to 25 knots. Waves 3 to 4 feet.

SATURDAY

Southeast winds 20 to 25 knots, diminishing to 15 to 20 knots in the afternoon. Waves 4 to 5 feet.

SATURDAY NIGHT

Southeast winds 25 to 30 knots, diminishing to 20 to 25 knots after midnight. Waves 4 to 5 feet.

SUNDAY

Southeast winds 25 to 30 knots, diminishing to 20 to 25 knots in the afternoon. Waves 4 to 5 feet.

SUNDAY NIGHT

Southeast winds 25 to 30 knots, diminishing to 20 to 25 knots after midnight. Waves 4 to 5 feet.

MONDAY

Southeast winds 20 to 25 knots, diminishing to around 15 knots in the afternoon. Waves 3 to 4 feet. A slight chance of showers and thunderstorms in the afternoon.

MONDAY NIGHT

Southeast winds 10 to 15 knots. Waves 2 to 3 feet.

TUESDAY

Southeast winds around 10 knots. Waves around 2 feet. A slight chance of showers and thunderstorms.

TUESDAY NIGHT

Southeast winds 5 to 10 knots. Waves around 2 feet.

Winds and waves higher in and near thunderstorms.

GMZ046-262015

Central Gulf from 22N to 26N between 87W and 91W
404 AM EDT Fri Apr 26 2024

TODAY

E to SE winds 15 to 20 kt. Seas 4 to 6 ft.

TONIGHT

E to SE winds 20 to 25 kt. Seas 5 to 7 ft.

SAT

E to SE winds 20 to 25 kt. Seas 6 to 9 ft in E swell.

SAT NIGHT

E to SE winds 20 to 25 kt. Seas 6 to 9 ft in E swell.

SUN

E to SE winds 15 to 20 kt. Seas 6 to 9 ft in E swell.

SUN NIGHT

E to SE winds 20 to 25 kt. Seas 6 to 9 ft in E swell.

MON

E to SE winds 15 to 20 kt. Seas 6 to 8 ft in E swell.

MON NIGHT

E winds 15 to 20 kt. Seas 5 to 7 ft.

TUE

E to SE winds 15 to 20 kt. Seas 5 to 7 ft.

TUE NIGHT

E winds 15 to 20 kt. Seas 4 to 6 ft.